

LOFT FOR LEASE | GLASSWORKS A

1320 ELLSWORTH INDUSTRIAL BLVD. ATLANTA, GA 30318



PROPERTY DETAILS

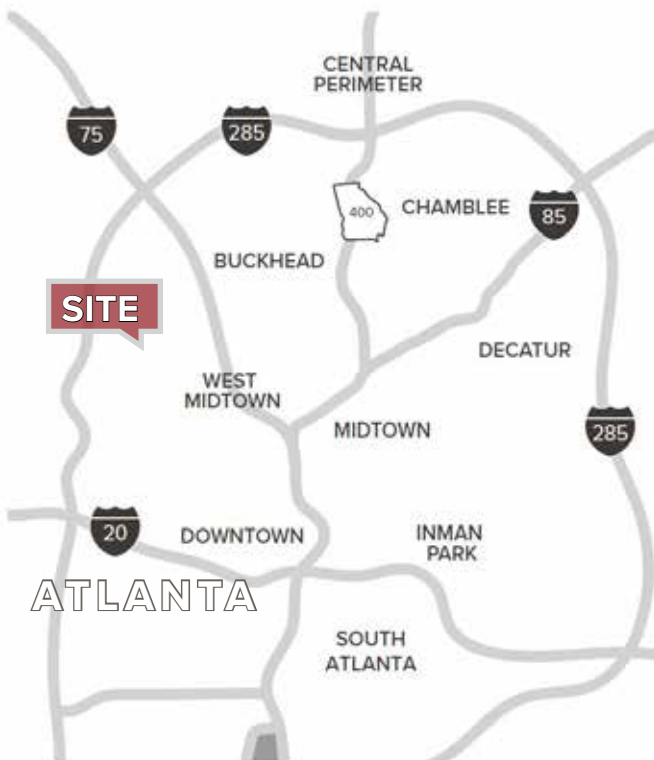
Loft Office FOR LEASE in West Midtown

- +/- 733 - 1,789 SF
- Plentiful natural light
- Secured access
- Abundant free surface parking in gated lot
- Loft-style finishes
- Great West Midtown location
- Walking distance to Star Provisions, Bacchanalia, Bone Garden Cantina, Twisted Soul Cookhouse and more.



LOFT FOR LEASE | GLASSWORKS A

1320 ELLSWORTH INDUSTRIAL BLVD. ATLANTA, GA 30318



TRAFFIC COUNTS

-  Marietta Blvd NW @ Huff Rd NW 11,970
-  Howell Mill Rd @ Huff Rd NW 18,750
-  Chattahoochee Ave NW @ Howell Mill Rd 18,700

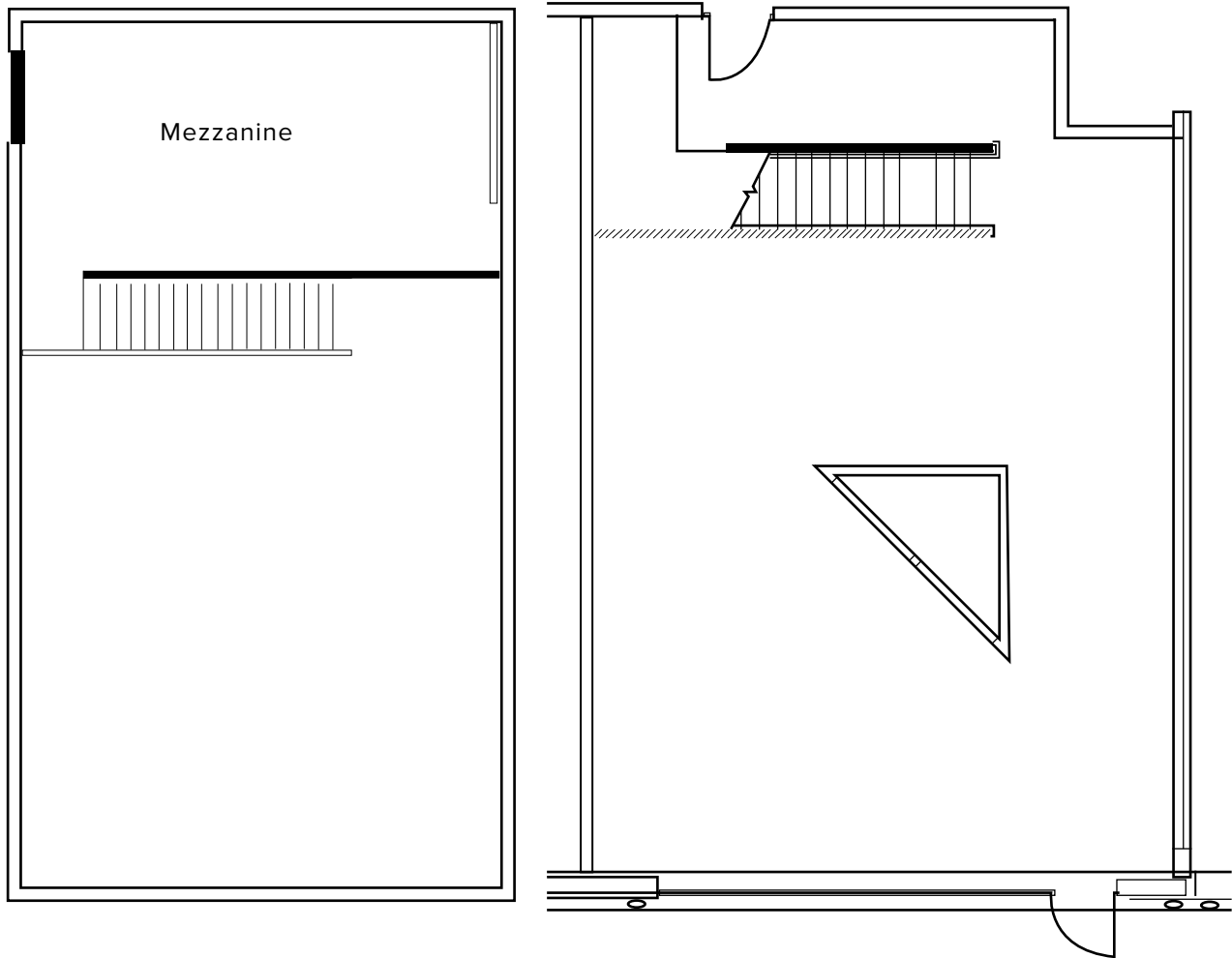
DEMOGRAPHICS

	1 Mile	3 Miles	5 Miles
Population	6,677	127,397	39,498
Daytime Population	12,449	257,618	566,255
Median Age	32.5	31.3	33.5
Average Household Income	\$94,495	\$97,598	\$97,062

LOFT FOR LEASE | GLASSWORKS A

1320 ELLSWORTH INDUSTRIAL BLVD. ATLANTA, GA 30318

FLOOR PLAN



Suite 1700 - ± 1,789 SF

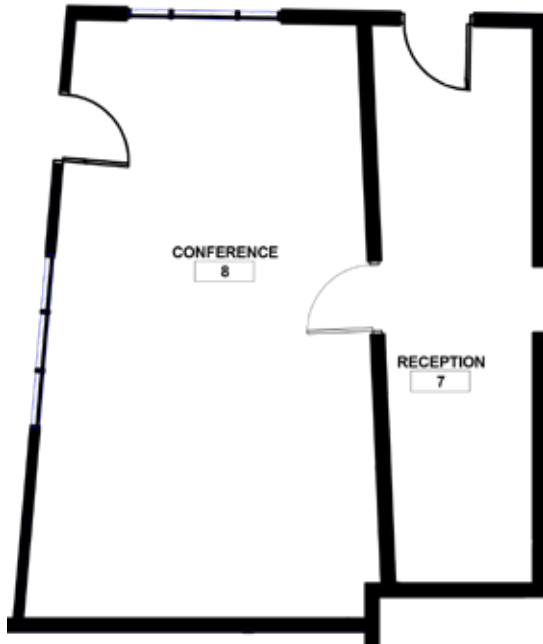


LOFT FOR LEASE | GLASSWORKS A

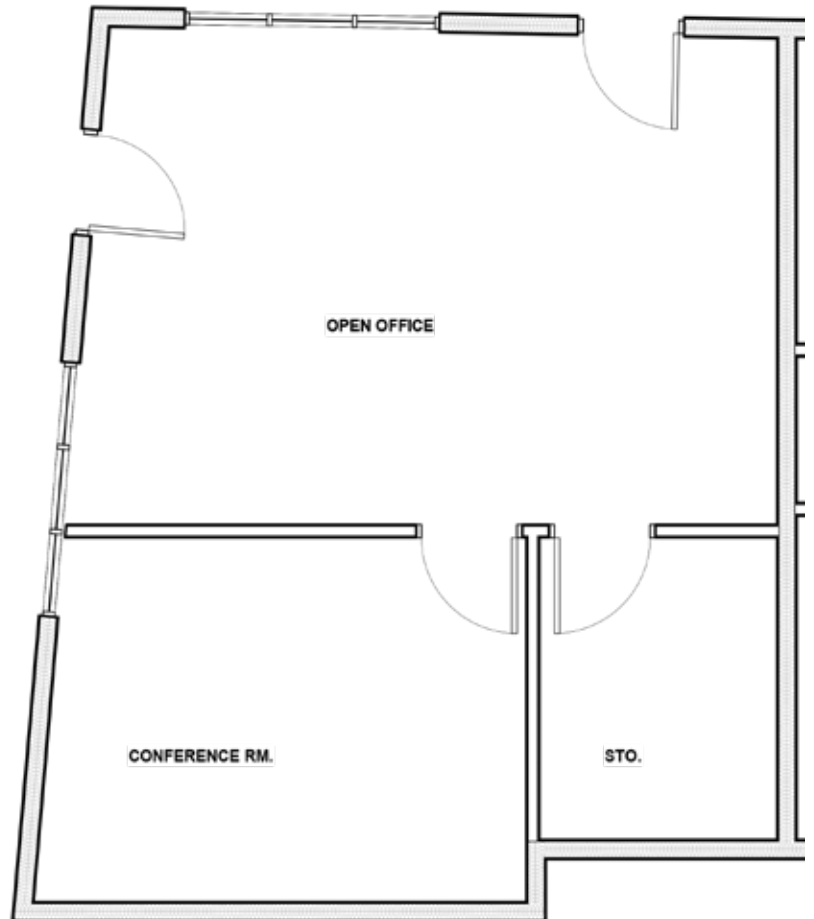
1320 ELLSWORTH INDUSTRIAL BLVD. ATLANTA, GA 30318

FLOOR PLAN

Proposed Plan



Existing Plan



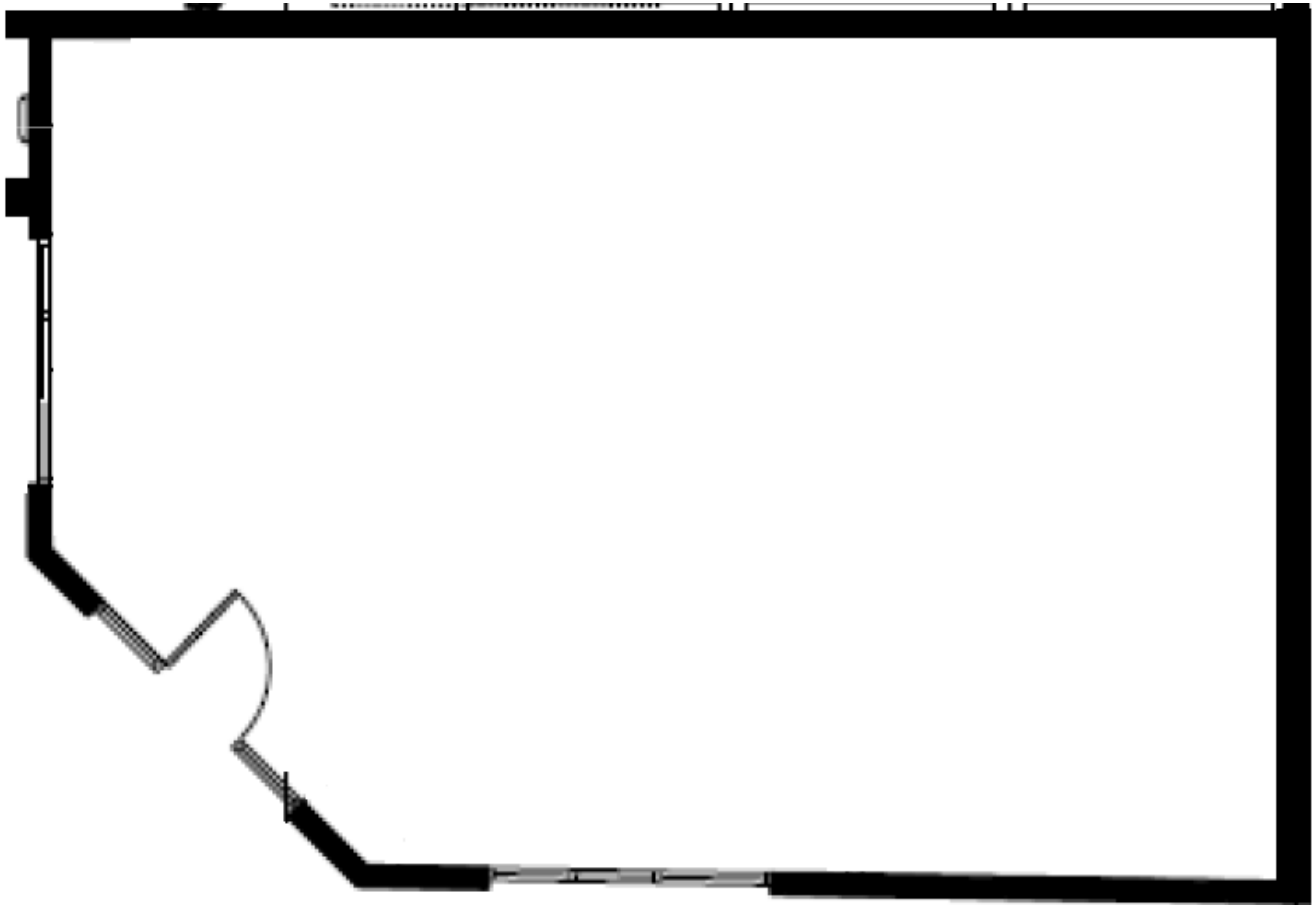
Suite 1100 - ± 733 SF



LOFT FOR LEASE | GLASSWORKS A

1320 ELLSWORTH INDUSTRIAL BLVD. ATLANTA, GA 30318

FLOOR PLAN



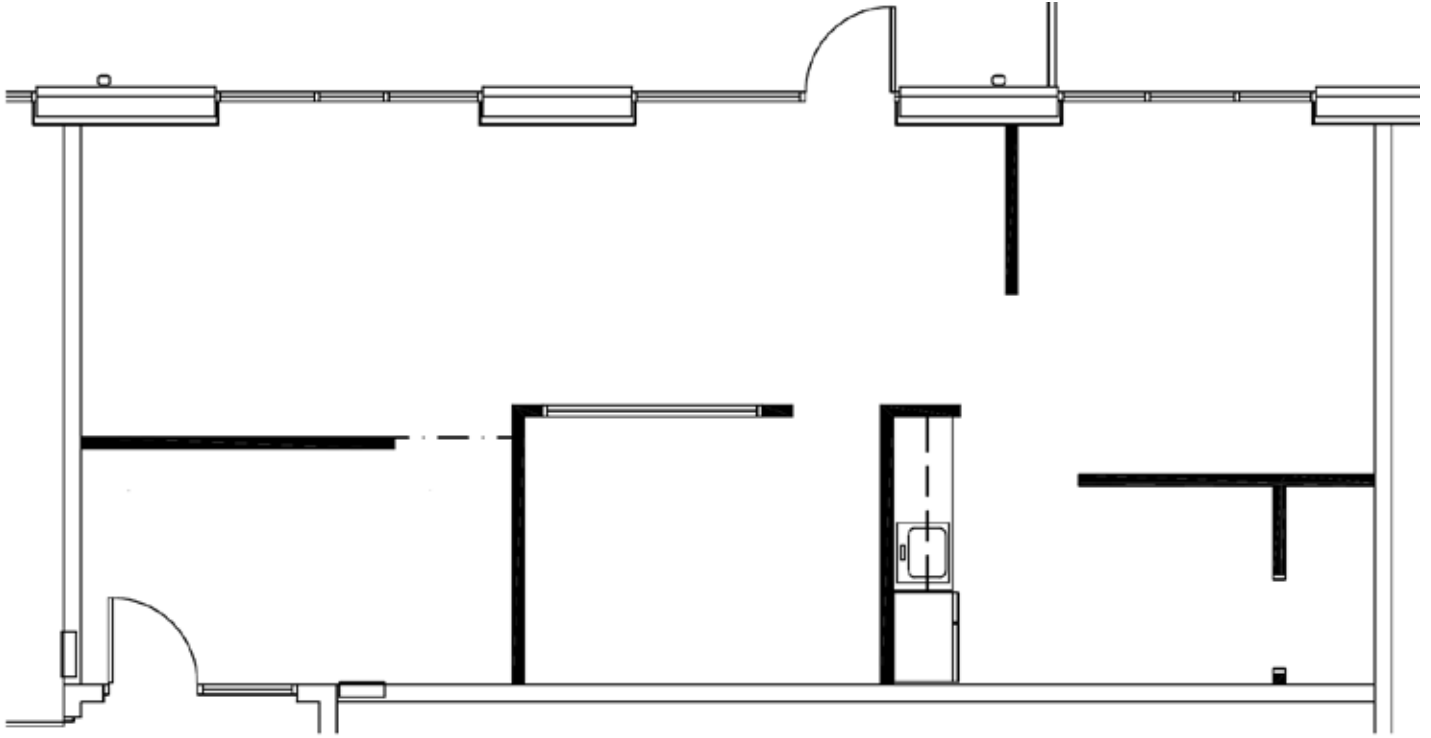
Suite 500 - ± 975 SF



LOFT FOR LEASE | GLASSWORKS A

1320 ELLSWORTH INDUSTRIAL BLVD. ATLANTA, GA 30318

FLOOR PLAN



Suite 600 - ± 1,095 SF

