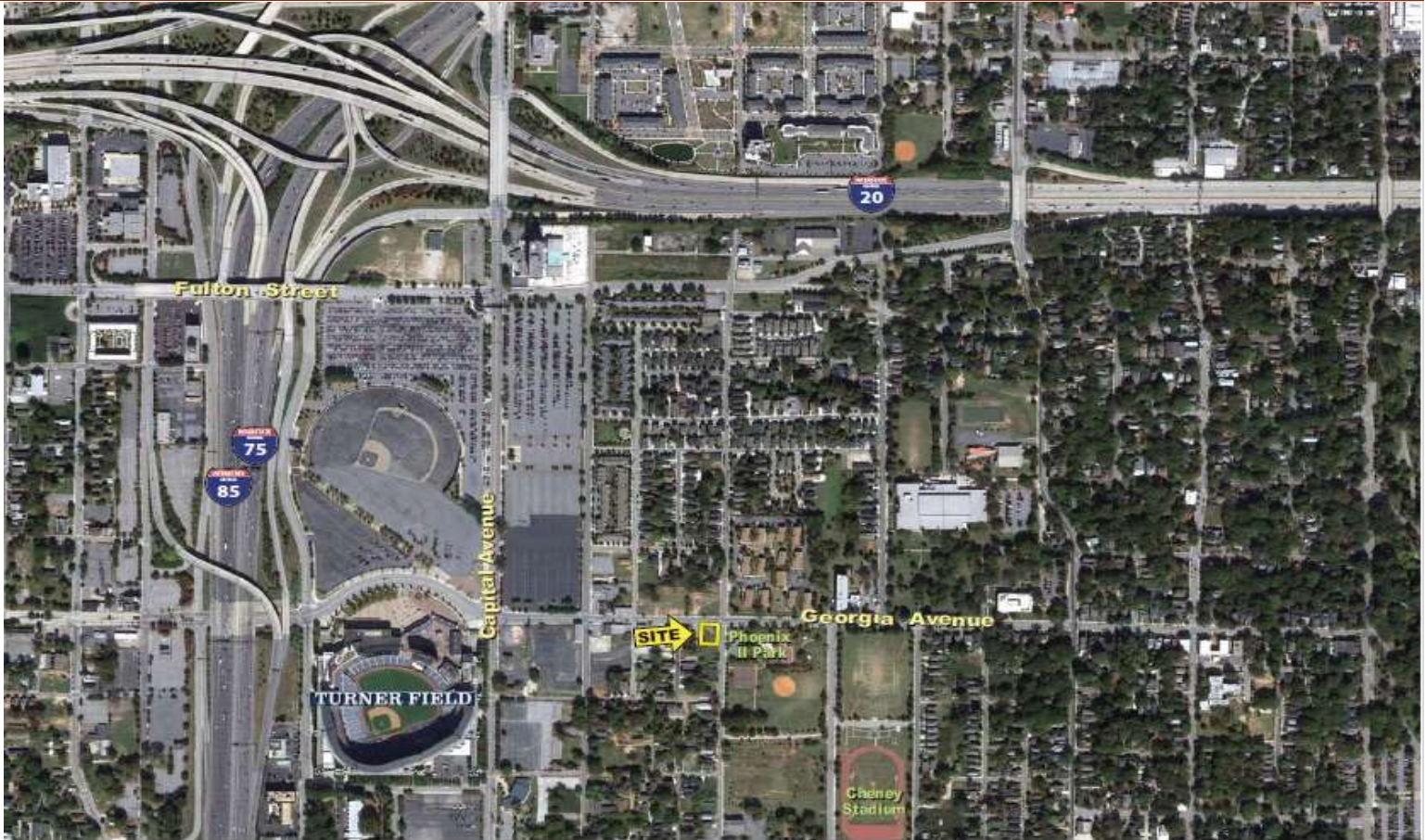


FOR SALE > +/- 0.29 ACRE > GRANT PARK

105 Georgia Avenue

Atlanta, GA 30312



PROPERTY DETAILS:

- 0.29 +/- Acre
- Frontage along Georgia Avenue (90 feet) and Martin Street (140 feet)
- C-1 Zoning
- Less than ¼ mile from Turner Field/potential GSU redevelopment
- Close proximity to I-20 and I-75/85
- All Utilities available subject to independent verification
- Asking Price: \$195,000

For more information please contact:

Philip Covin
(404) 662-2212
pcovin@pollockcommercial.com

WWW.POLLOCKCOMMERCIAL.COM

LOCATION MAP:



For more information please contact:

Philip Covin
(404) 662-2212
pcovin@pollockcommercial.com

No warranty or representation, express or implied, is made as to the information contained herein, and same is submitted subject to errors, omissions, change of price, rental, or other conditions, withdrawal without notice, and to any special listing conditions, imposed by our principals.

225 Ottley Drive, Suite 130
Atlanta, GA 30324
tel. 404-662-2211

