

LEASE > WEST MIDTOWN > LOFT OFFICE

# Glassworks

1320 Ellsworth Industrial Blvd

Atlanta, GA 30318



## ***MORE INFORMATION:***

Philip Covin  
Vice President  
[pcovin@pollockcommercial.com](mailto:pcovin@pollockcommercial.com)  
(404) 662-2212 (o)  
(404) 863-4163 (c)

LEASE > WEST MIDTOWN > LOFT OFFICE

# Glassworks

1320 Ellsworth Industrial Blvd

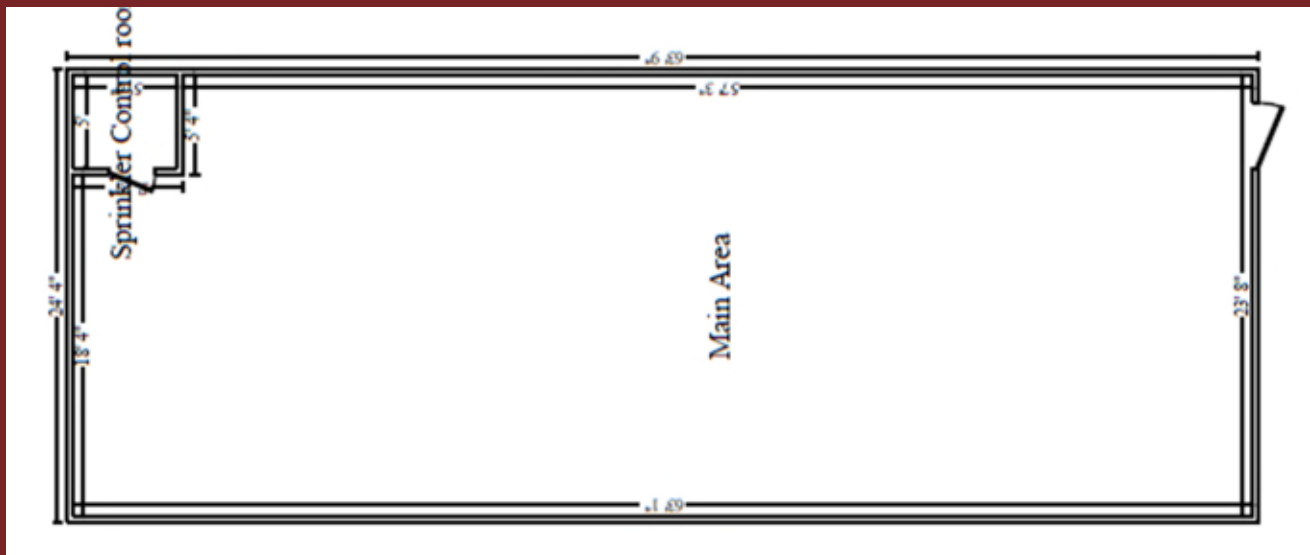
Atlanta, GA 30318



## PHOTOS



## FLOOR PLAN



# Glassworks

1320 Ellsworth Industrial Blvd  
Atlanta, GA 30318

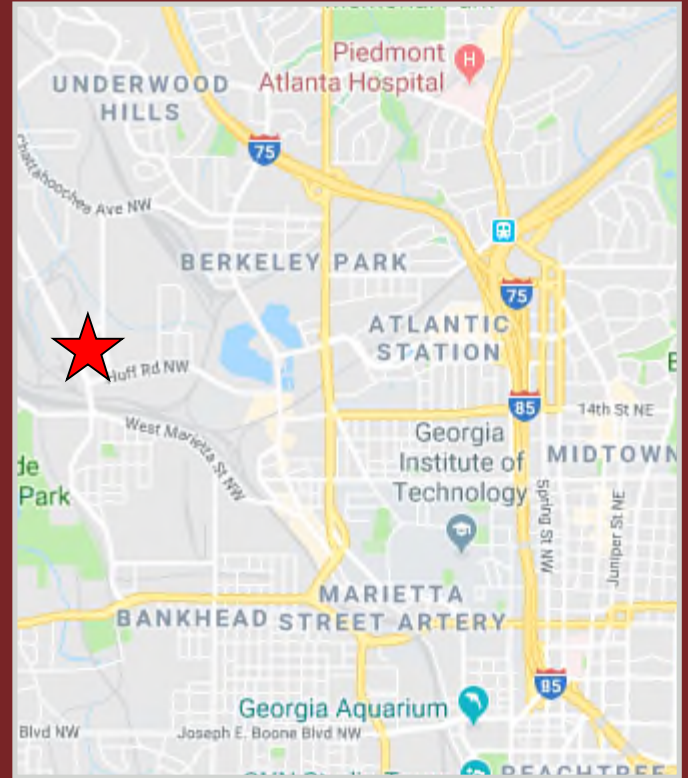


## PROPERTY FEATURES

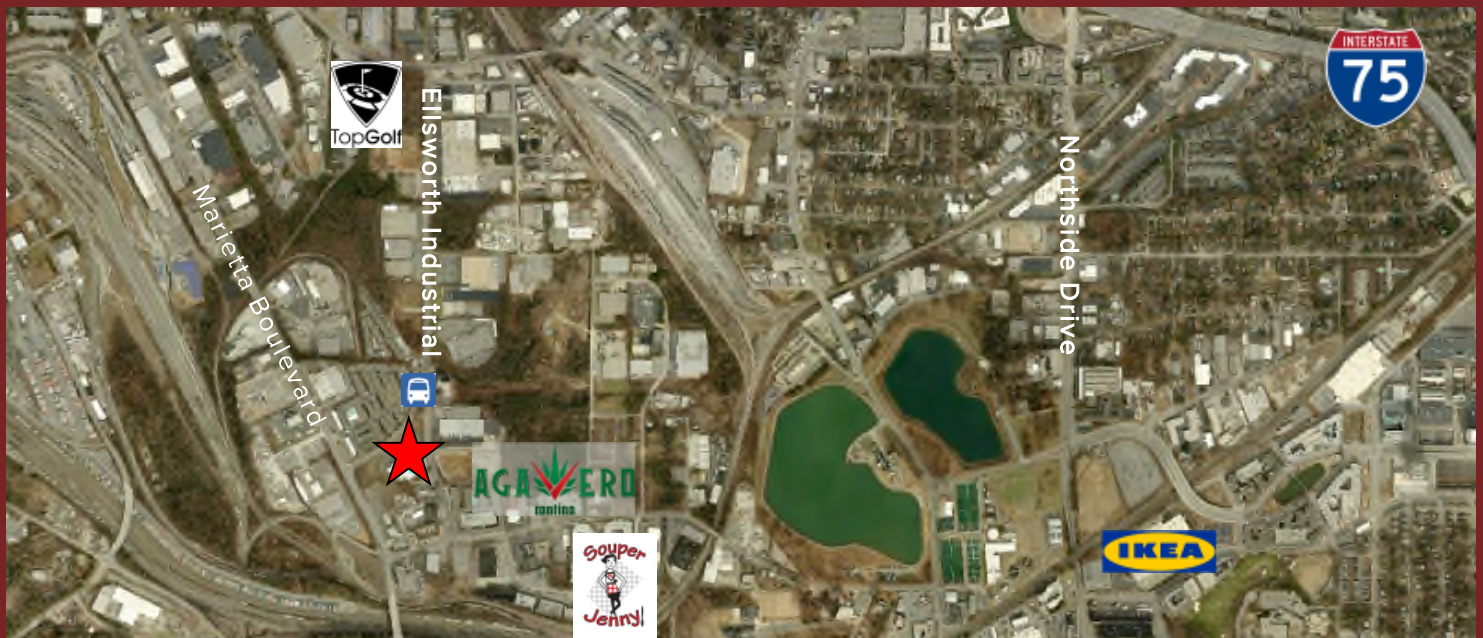
- Suite B-100
- +/- 1,512 square feet
- Shell condition - build to suit
- Plentiful natural light including large skylight
- Abundant surface parking
- Corner unit with prominent exposure and direct access.
- Great West Midtown location
- Walking distance to Star Provisions Market & Café, Bacchanalia, Bone Garden Cantina, Twisted Soul Cookhouse & Pours.

**\$27.25/sf Modified Gross**

## MAP



## AERIAL



No warranty or representation, express or implied, is made as to the information contained herein, and same is submitted subject to errors, omissions, change of price, rental, or other conditions, withdrawal without notice, and to any special listing conditions, imposed by our principals.