

FOR LEASE > MIDTOWN > OFFICE/RETAIL

# 2123 Liddell Dr NE

Atlanta, GA 30324



## MORE INFORMATION:

Michael Dinerman  
Vice President

[michael@pollockcommercial.com](mailto:michael@pollockcommercial.com)

(404) 310-4577

 [linkedin.com](https://www.linkedin.com)

# 2123 Liddell Dr NE

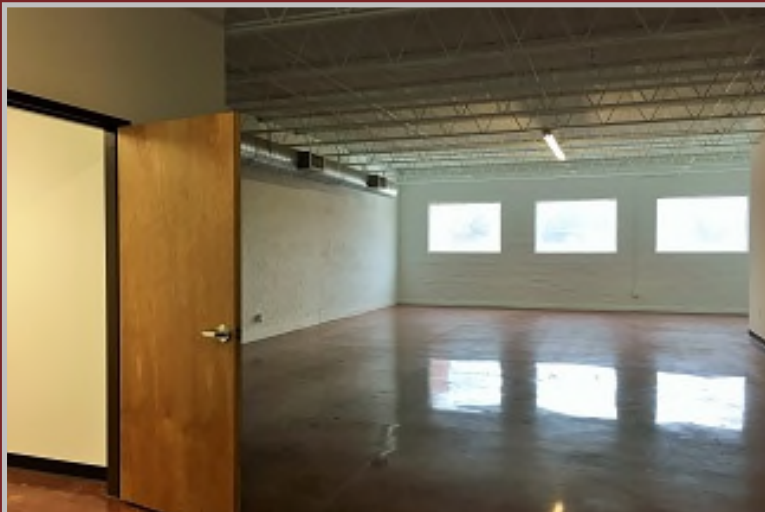
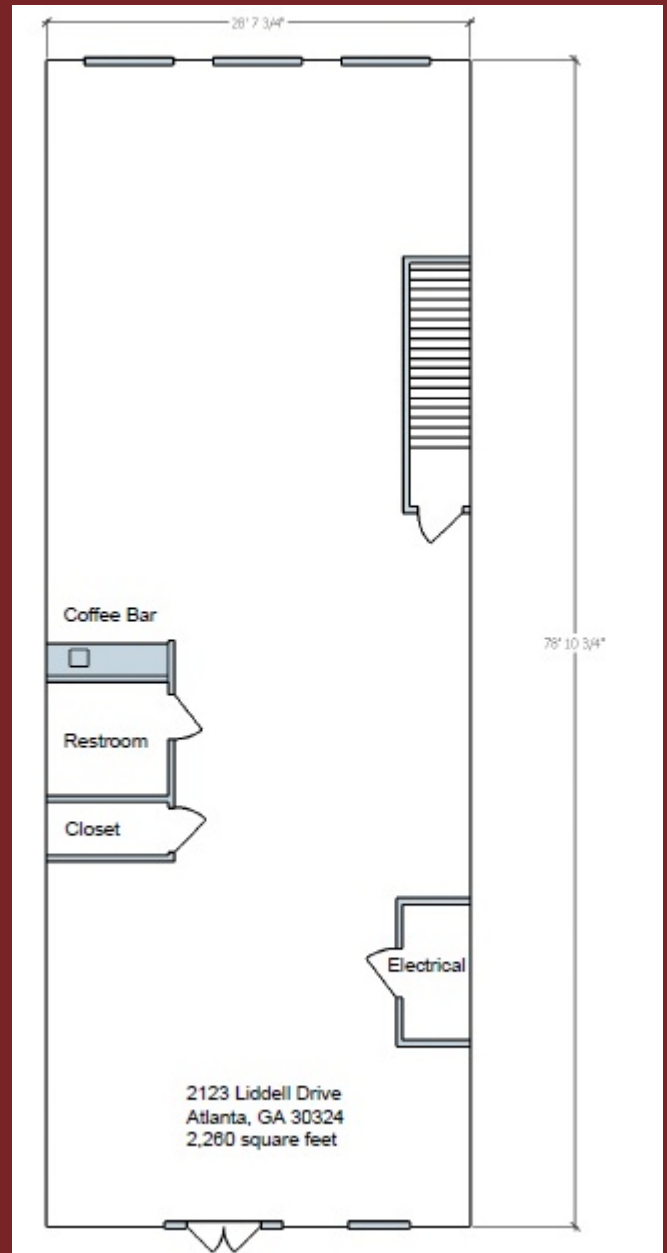
Atlanta, GA 30324



## Property Features:

- 2,260 sf +/- available space
- Open floor plan
- New roof
- New storefront double doors and window
- 6 parking spaces, (3 front/3 rear)
- Private rear entrance
- New ADA restroom
- Coffee bar with granite countertop
- Two rooftop air conditioners with gas heat
- Interior lighting to suit tenant
- 120/240/480 volt, three-phase electricity

## FLOOR PLAN



FOR LEASE > MIDTOWN > OFFICE/RETAIL

2123 Liddell Dr NE

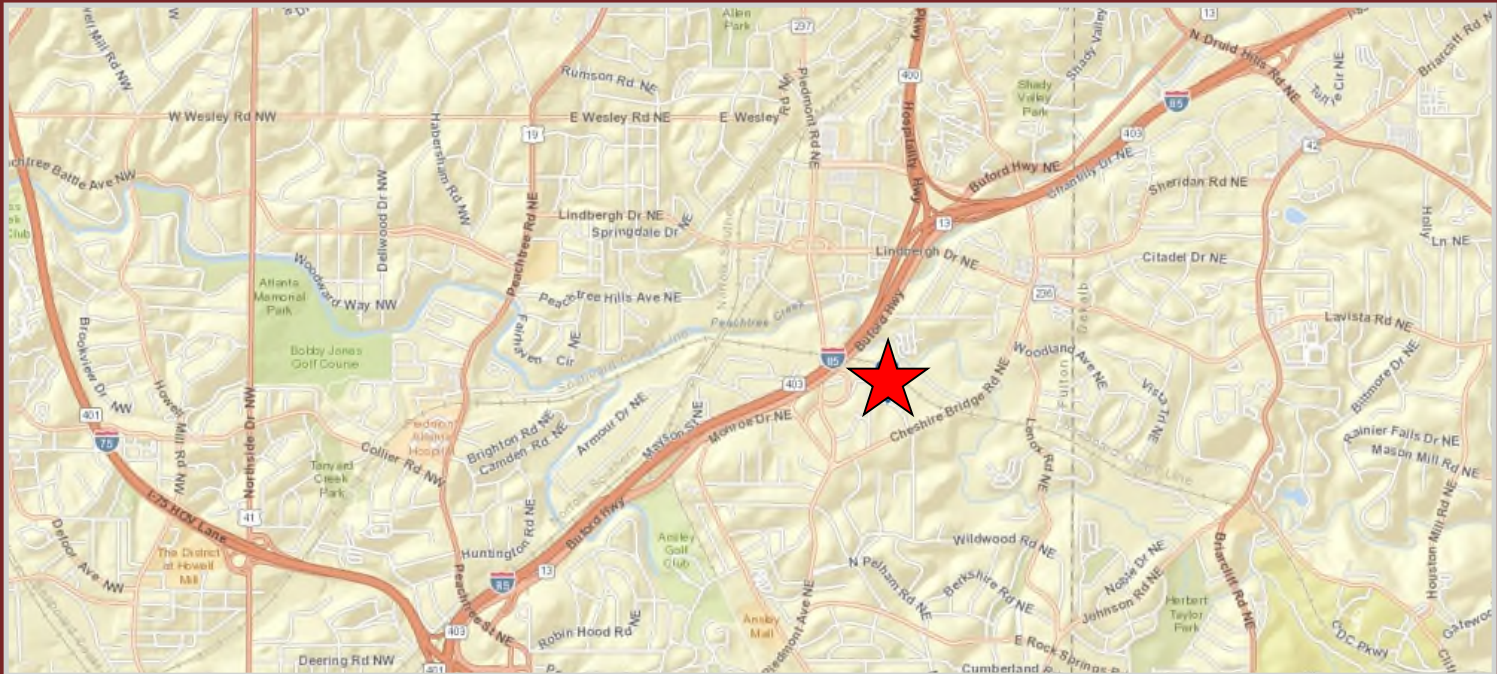
Atlanta, GA 30324



AERIAL



MAP



No warranty or representation, express or implied, is made as to the information contained herein, and same is submitted subject to errors, omissions, change of price, rental, or other conditions, withdrawal without notice, and to any special listing conditions, imposed by our principals.