

FOR SALE > WEST MIDTOWN > LIVE-WORK/ STUDIO SPACE

KING PLOW ARTS CENTER

887 West Marietta Street, Unit S-108, Atlanta, GA 30318



POLLOCK
COMMERCIAL





KING PLOW ARTS CENTER

887 West Marietta Street, Unit S-108, Atlanta, GA 30318

Property Features:

Large live/work space with unique finishes perfect for studio

- Hard wood flooring
- Exposed wood beams
- Wrought-iron spiral staircases
- Access to large outdoor patio
- Large windows with abundant natural light
- Full kitchen
- 1 Full bath with tub/shower

Location Features:

Located in West Midtown in the King Plow Arts Center a one-of-a-kind adaptive reuse project that originated as a plow factory in the 1890s and is one of the largest projects of its kind in Atlanta. This property offers unique access to artisans, galleries, restaurants and special events.

Property Data:

Unit Size: 1,989 square feet

Year Built: 1936

Stories: Single story with two lofts

Parking: 1 reserved with deck access

Zoning: Live/Work

County: Fulton

Estimated Taxes: \$4,425.28 (2015)

Sale Price: \$295,000



KING PLOW ARTS CENTER

887 West Marietta Street, Unit S-108, Atlanta, GA 30318



POLLOCK
COMMERCIAL

PROPERTY PHOTOS



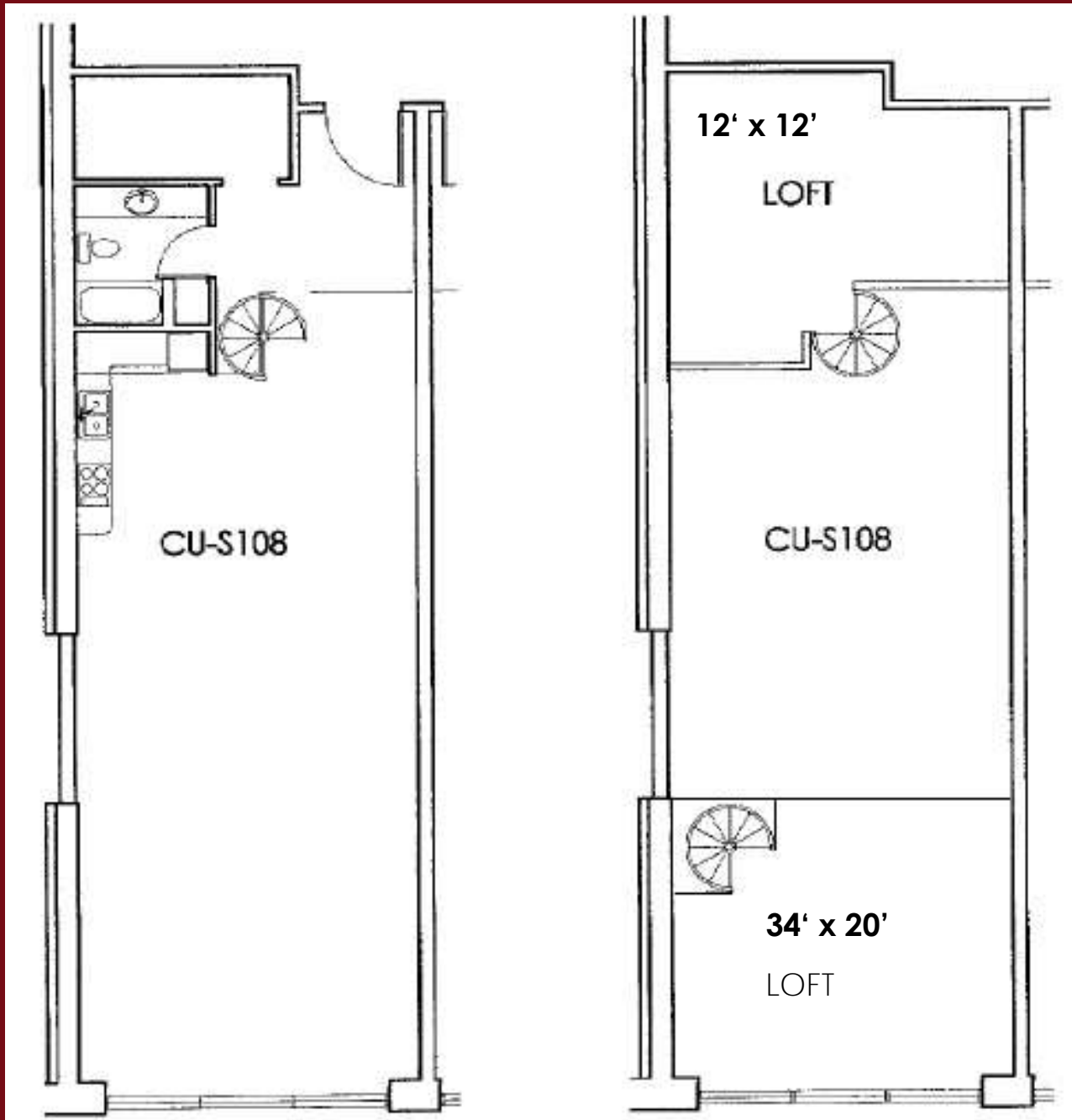
[VIEW MORE PHOTOS](#)



KING PLOW ARTS CENTER

887 West Marietta Street, Unit S-108, Atlanta, GA 30318

FLOOR PLAN





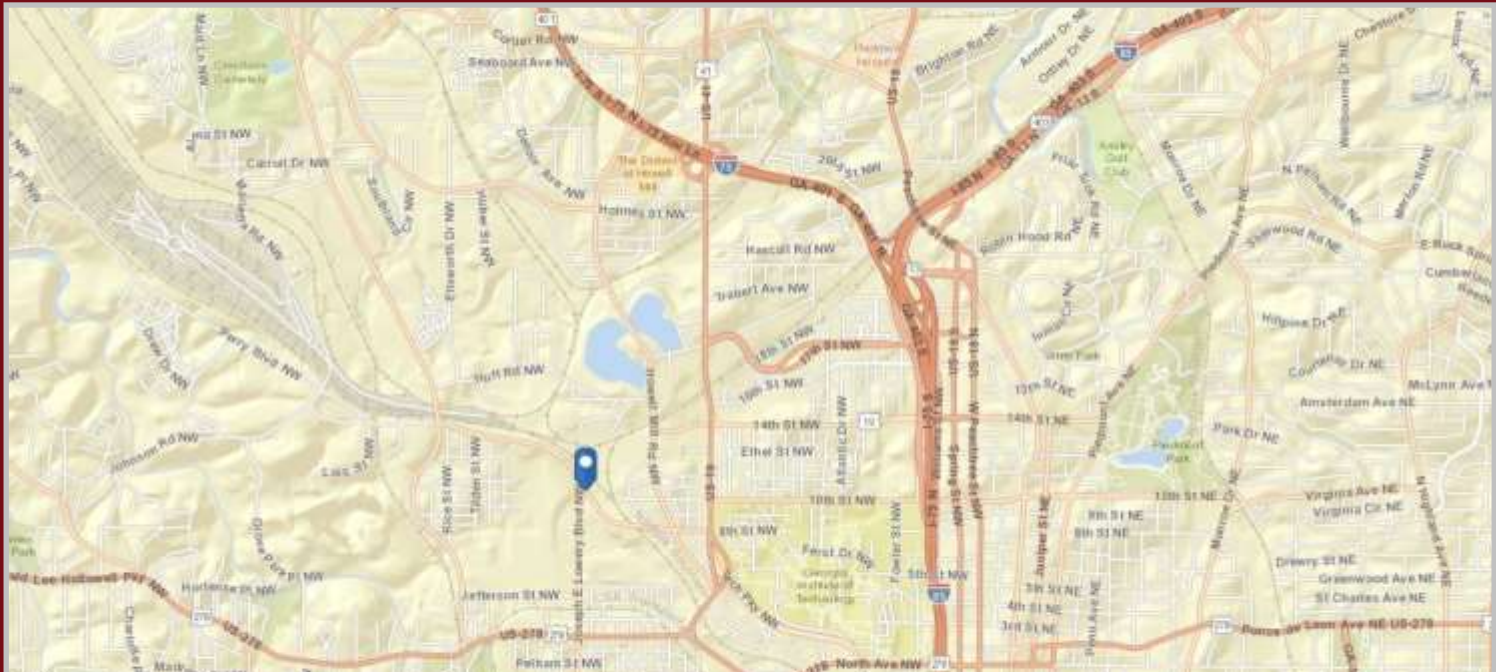
KING PLOW ARTS CENTER

887 West Marietta Street, Unit S-108, Atlanta, GA 30318

AERIAL



MAP



No warranty or representation, express or implied, is made as to the information contained herein, and same is submitted subject to errors, omissions, change of price, rental, or other conditions, withdrawal without notice, and to any special listing conditions, imposed by our principals.